

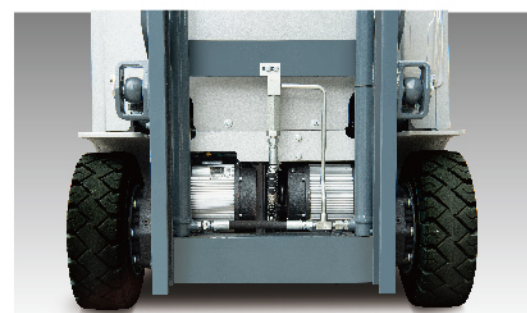
HELI

COMPACT BODY
STRONG ENERGY



STRONG ENERGY

High performance ensures high efficiency



Front wheel dual drive motors offer provide more power.



16-17km/h
Driving speed



22%
Maximum gradeability with load



0.45m/s
Maximum lifting speed with load



0.6m/s
Maximum lifting speed without load

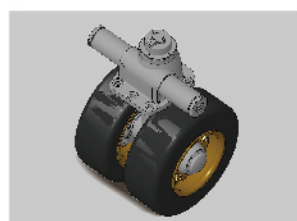


Good bearing capacity
at high position

Fast charging for long battery life



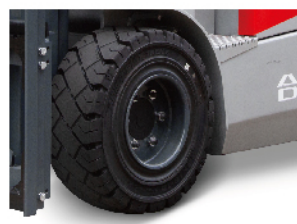
Be equipped with full hydraulic priority steering system, supply oil on demand, reduce vehicle energy consumption



High precision angle potentiometer makes steering more sensitive and accurate.



LED light of the whole truck has high brightness, long life and is more energy saving.



Low rolling resistance electric truck special solid tire reduces driving resistance consumption.

Small dimension, More flexible

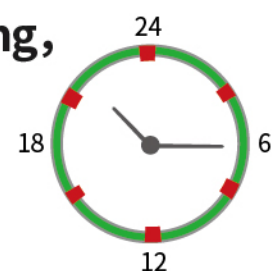
Narrow truck width is more suitable for narrow aisle application;

Large angle steering axle makes the turning radius smaller satisfying the loading and unloading operation in narrow aisle.



High efficient fast charging, ultra long endurance

- Realizes faster charging; standard 202ah lithium battery has ultra long endurance;
- The high density energy and fast charging characteristics of lithium battery make it possible to carry out full time operation without interruption.



Working time Charging time



Enjoy driving experience



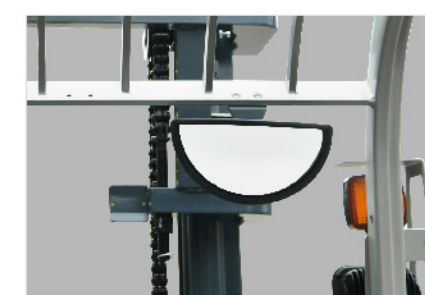
CURTIS Display



FJ Display



- P — Powerful
 - E — Economical
 - S — Energy-saving
- Multi-gear performance mode can adapt to a variety of working conditions at will.



Middle rearview mirror



Brand new pedal parking system, ergonomic design, easy to use



USB power supply



Storage box



The mast with large opening offers good driving vision ensuring operation comfort and safety.



Large space to get on, and large leg space, more comfortable operation