

Options sheet		
Model number	Standard configuration	Optional configuration
Safety class	Rotating warning light	Battery built-in fire extinguishing system (Changes in warranty treaties)
	Turn signal light	Centralized fire fighting system
	Reverse buzzer	-
	Visual reverse radar	-
	Identification module meeting TSG 81	-
	Tilt oil circuit self-locking valve	-
	Lift oil circuit self-locking valve	-
Mast / attachments	3m mast	-
	Side shift fork positioner	-
	-	Whole vehicle lifting spreader
	-	Full free mast boom
Comfort Class	Grammer full suspension seats	boom
	Full hydraulic power steering	Fork arm extension
	USB charging port	-
	Radio	-
	Air conditioning for heating and cooling	-
Tires	Patterned durable pneumatic tires	Full solid tires
	-	Front solid tires / inflatable rear tires
	-	Inflatable front tires / rear solid tires
Else	Patterned durable pneumatic tires	Centralized lubrication system
	Electric tilting cab	Weighing system
	Truck accompanying tools	-
	Truck networking terminal	-
	Double gun charging port	-
	Fixed/variable hydraulic system	-
	Hydraulic circuit oil filter	-
	Wet brake	-

Attachments options	
	<b>Side shift forks (standard)</b> It has the functions of fork positioners and side shift to improve the working efficiency
	<b>Fork arm extension</b> Effective extension of fork, suitable for larger shape cargo handling
	<b>Boom</b> Suitable for goods in coils of steel, wire, etc
	<b>Arm</b> Lifting cargo safely and efficiently
	<b>Pipe and wire spreader</b> Suitable for the lifting of bundles of steel bars, steel pipes and other goods

14-18 t

G series Lithium Battery Counterbalance Forklift Truck



ANHUI HELI CO., LTD.

Add / No.668, FangXing Road, Hefei, China  
Fax / +86-551-63639966  
Tel / +86-551-63639068(America); 63639258(Europe);  
63639358(Asia); 63662105(Africa & Middle East)



LinkedIn



YouTube



Facebook

*With more than 60 years  
of Heli technical precipitation*

HELI collaborates with the  
strengths of others and creates  
high-quality products.



Heli 14-18 tons electric forklift can be widely used in enterprises, stations, ports, docks, cabins and other places, for handling overweight, oversized cargo and handling and stacking some models of empty container.

# A

## CHARACTERISTIC

### 1

## MATURE PLATFORM

THE PLATFORM ENSURES TRUCK RELIABILITY AND DURABILITY.

With more than 60 years of efforts, Heli never stop

With good component development ability, the truck has good quality with exquisite design details.

The standardize platform design ensures high degree of universality.

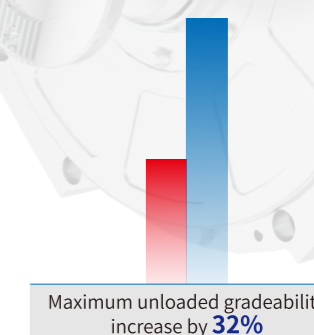
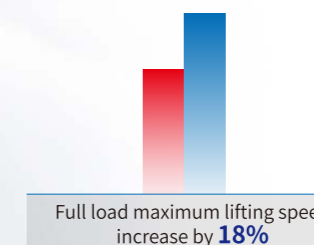
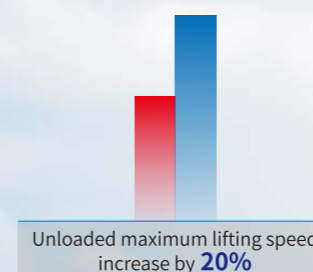
Heavy truck lithium models uses mature platform, the standardization rate of the truck is more than 68%, and the standardization coefficient is more than 80%; Heli homemade integrated with battery box and batteries which can be applied in different tons of six kinds of models, effectively reduce numbers of spare parts and management costs.

### 2

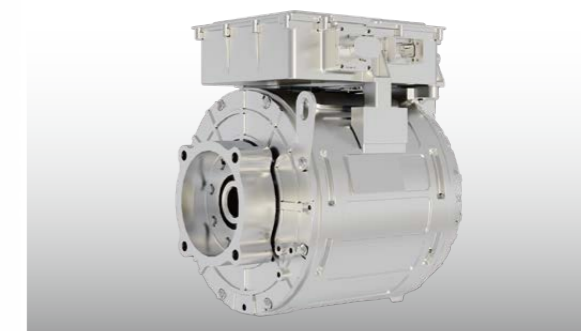
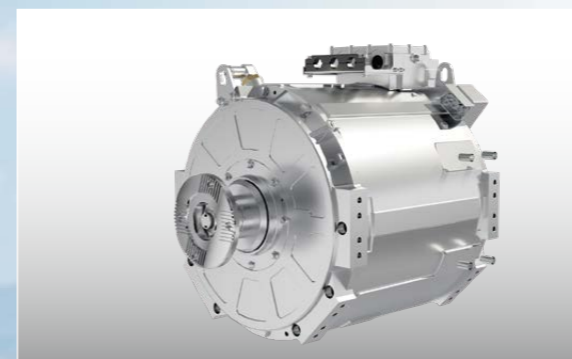
## STRONG PERFORMANCE

UP TO 32% BETTER PERFORMANCE THAN TRADITIONAL INTERNAL COMBUSTION TRUCKS

- The performance is equal to or even better than the mainstream internal combustion heavy truck, and the work efficiency is high.



- The permanent magnet synchronous motor has the advantages of high working efficiency, fast response speed, low failure rate and good energy saving effect.
- The motor and electric control are cooled by water cooling to ensure its superior working condition.



- The truck is equipped with heavy truck special high-speed drive axle and wet brake which offer the features of dust proof, water proof and maintenance-free; Excellent braking performance meets the requirements of long time heavy working conditions; High axle housing strength ensures improved transfer efficiency and reliable performance;

- The hydraulic system has potential energy recovery function; The hydraulic system has excellent performance, good handling performance, high accuracy, and the truck is stable and reliable.

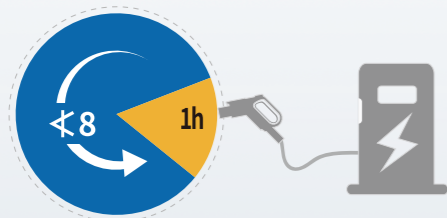


## 3

## LONG BATTERY ENDUREANCE

## THE CHARGING PORT IS COMPATIBLE WITH NEW ENERGY TRUCK CHARGING PILE

According to the needs of customers, a variety of power lithium batteries are optional, and the use of double guns for 1 hour can meet the use of normal working conditions  $\leq 8$  hours.

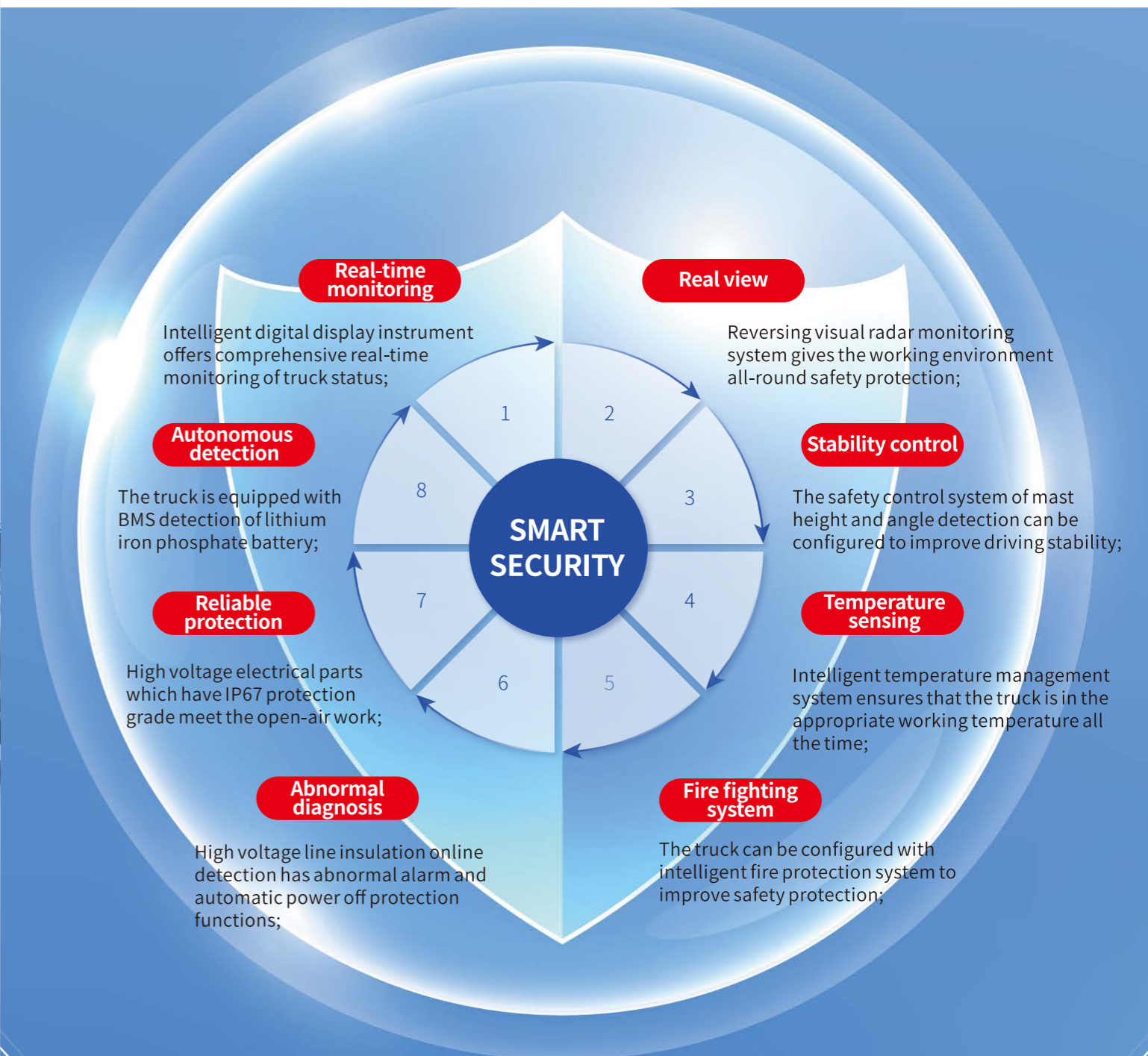


## 4

## SMART SECURITY

## EIGHT ASPECTS OF SECURITY

- The truck high voltage line has insulation online monitoring function, combined with intelligent fire protection system, real-time monitoring of truck status can be achieved;
- High protection level (IP67) high voltage electrical components and intelligent temperature management system meet the outdoor all-weather work needs.



## 5

COMFORTABLE  
AND ECO-FRIENDLYA RELAXED DRIVING EXPERIENCE  
FOR CUSTOMERS

- Vibration reduction: the use of full suspension knitted surface seat greatly improves the ride comfort.
- Noise reduction: fully closed electric tilting cab reduces the noise transmission of the whole machine.
- Wide vision mast offers good operating vision; Standard rear working light makes work easy at night.
- Rich instrument display content and human-computer interaction interface achieves timely acquisition of truck status, ensuring safe driving, stable operation.
- Full hydraulic power steering make operation light and flexible.
- Standard configuration of heating and cooling dual high-pressure electric split air conditioning offers high air conditioning energy utilization. The air duct is the front and the lower part, giving the driver a comfortable operating environment.
- The action of the mast is controlled by the thumb switch, which makes the operation more light.



- Low noise when the truck runs reduces noise pollution.
- Pure electric operation achieve "zero emissions".

## 6

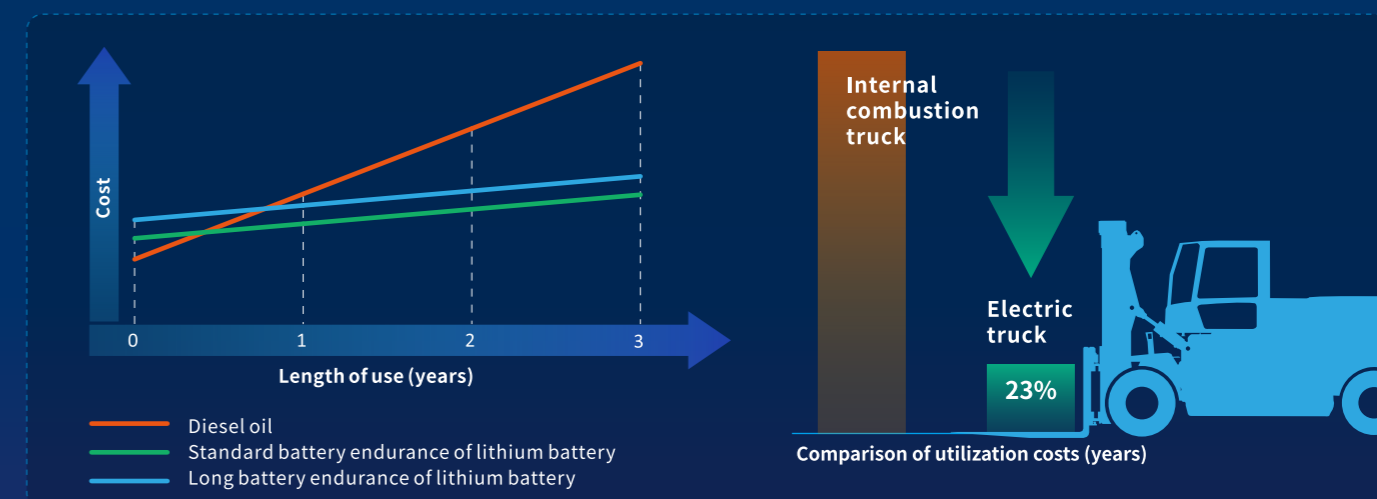
## EASY MAINTENANCE

The comprehensive use cost is only 23% of the internal combustion forklift.

- Large tilting cab opening angle offers sufficient maintenance space;
- The new oil tank built-in suction filter offers convenient filter element replacement;
- Heli homemade integrated battery box with closed box and the plug-in sockets make the production, use and maintenance safer;
- Different ton models can share the same battery which effectively reduce numbers spare parts and management costs.



- The truck is equipped with potential energy recovery and kinetic energy regenerative energy technology, through which the energy is recovered and supplemented to the battery, further improving the system efficiency and truck life. The annual comprehensive use cost of electric truck is only 23% of the internal combustion truck.



\* Due to the differences in working conditions, the fluctuation of electricity price and oil price, the data will fluctuate also, so the above data is for reference only.

# B

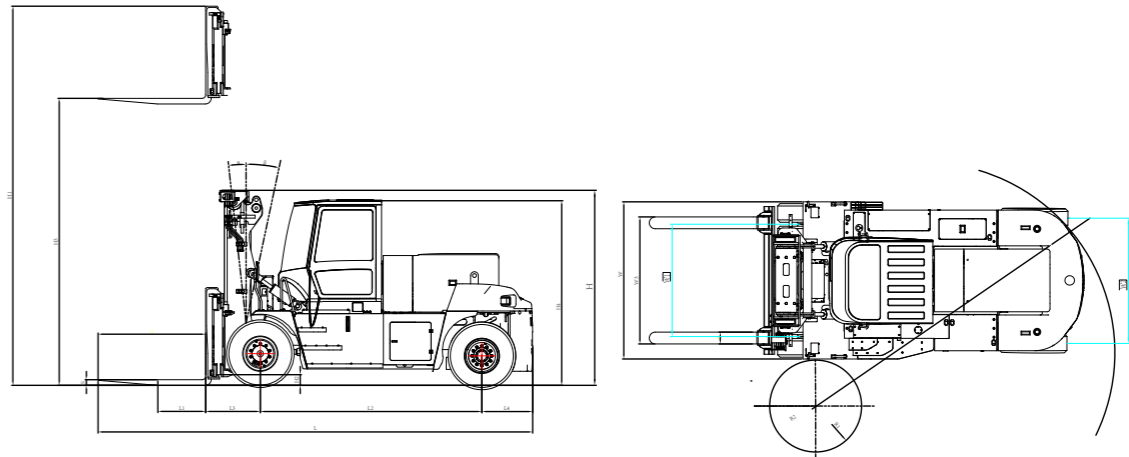
## TECHNICAL PARAMETERS

### TECHNICAL PARAMETERS

Characteristic							
				CPD140	CPD150	CPD160	CPD180
1.1	Rated capacity		kg	14000	15000	16000	18000
1.2	Load center distance	L1	mm	900			
1.3	Power mode		/	Electric			
1.4	Driving mode		/	Ride-on			
1.5	Lifting height(standard)	H3	mm	3000			
1.6	Mast tilt angle (forward/backward)		α/β	deg 6/12			
1.7	Wheel base		L2	mm 3750			
1.8	Tread(forward/backward)	W1/W2	mm	1895/2120			
1.9	Overhang(forward/backward)	L3/L4	mm	935/850			1010/850
1.10	Overall width	W	mm	2660			
1.11	Overall length(without fork)	L	mm	5535			5610
1.12	Overall height(cab/mast/max.height,extended)	H4/H/H1	mm	3200/3340/4840			3340/3385/4885
1.13	Min.ground clearance (mast)		H2	mm 290			
1.14	Max.grade ability,laden/unladen		%	18/25			15/25
1.15	Min.turning radius	R2	mm	5100			
1.16	Fork size		mm	1820X200X95			
1.17	Fork adjustment range (outside of fork)		mm	610-2150			
1.18	Max.travel speed (laden/unladen)		km/h	27/28			24/26
1.19	Max.lift speed (laden/unladen)		mm/s	400/430			380/400
1.20	Max.drawbarpull(laden)		KN	83			
1.21	Total weight		kg	21000	21500	22000	23500
1.22	Noise next to the driver's ear		dB(A)	75			
1.23	Tyre size(front/rear)			12.00-20-20PR/12.00-20-20PR			12.00-24-20PR/12.00-20-20PR
1.24	Motor	Driving motor	kW	135			
1.25		Pump motor	kW	90			
1.26		Type	Lithium Iron Phosphate				
1.27	Lithium Battery	Rated Voltage (Standard/Optional)	V	618/608			
1.28		Battery Capacity (Standard/Optional)	kwh	186/210			

### TECHNICAL PARAMETERS

Characteristic			CPD140	CPD150	CPD160
1.1	Rated capacity	kg	14000	15000	16000
1.2	Load center distance	L1	mm 1200		
1.3	Power mode	/	Electric		
1.4	Driving mode	/	Ride-on		
1.5	Lifting height(standard)	H3	mm 3000		
1.6	Mast tilt angle (forward/backward)	α/β	deg 6/12		
1.7	Wheel base	L2	mm 3750		
1.8	Tread(forward/backward)	W1/W2	mm 1895/2120		
1.9	Overhang(forward/backward)	L3/L4	mm 935/850		
1.10	Overall width	W	mm 2660		
1.11	Overall length(without fork)	L	mm 5535		
1.12	Overall height(cab/mast/max.height,extended)	H4/H/H1	mm 3200/3340/4840		
1.13	Min.ground clearance (mast)	H2	mm 290		
1.14	Max.grade ability,laden/unladen	%	18/25		
1.15	Min.turning radius	R2	mm 5100		
1.16	Fork size	mm	2440X200X100		
1.17	Fork adjustment range (outside of fork)	mm	610-2150		
1.18	Max.travel speed (laden/unladen)	km/h	27/28		
1.19	Max.lift speed (laden/unladen)	mm/s	400/430		
1.20	Max.drawbarpull(laden)	KN	83		
1.21	Total weight	kg	22000	22700	23500
1.22	Noise next to the driver's ear	dB(A)	75		
1.23	Tyre size(front/rear)		12.00-20-20PR/12.00-20-20PR		
1.24	Motor	Driving motor	kW 135		
1.25		Pump motor	kW 90		
1.26	Lithium Battery	Type	Lithium Iron Phosphate		
1.27		Rated Voltage (Standard/Optional)	V 618/608		
1.28		Battery Capacity (Standard/Optional)	kwh 186/210		

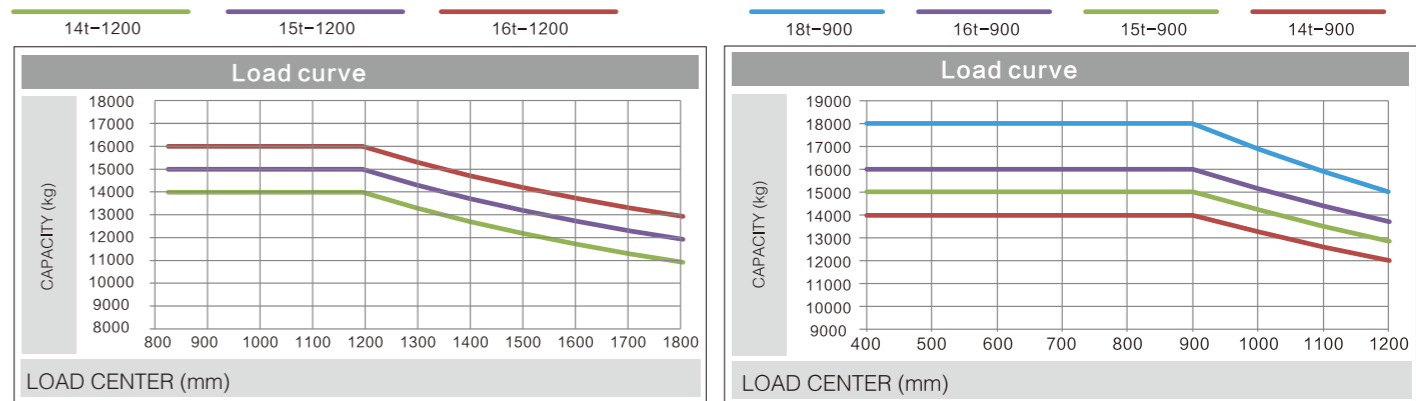


### Wide-field View Basic Mast

Mast type	Maximum lifting height (mm)	Load capacity (load center 900/1200mm) (kg)			The mast is on the ground Overall Height(mm)	Largest mast Height (mm)	Tilt angle (front/rear) (α/β)(°)
		CPD140	CPD150	CPD160			
M300	3000	14000	15000	16000	3340	4840	6/12
M350	3500	14000	15000	16000	3590	5340	6/12
M400	4000	14000	15000	16000	3840	5840	6/12
M450	4500	14000	15000	16000	4090	6340	6/12
M500	5000	14000	15000	16000	4340	6840	6/6
M550	5500	13000	14000	15000	4590	7340	3/6
M600	6000	12000	13000	14000	4840	7840	3/6
M650	6500	11000	12000	13000	5090	8340	3/6

### Wide-field View Basic Mast

Mast type	Maximum lifting height (mm)	Load capacity (load center 900mm) (kg)	The mast is on the ground Overall Height(mm)	Largest mast Height (mm)	Tilt angle (front/rear) (α/β)(°)
		CPD180			
M300	3000	18000	3385	4885	6/12
M350	3500	18000	3635	5385	6/12
M400	4000	18000	3885	5885	6/12
M450	4500	18000	4135	6385	6/12
M500	5000	18000	4385	6885	6/6
M550	5500	17000	4635	7385	3/6
M600	6000	16000	4885	7885	3/6
M650	6500	15000	5135	8385	3/6



Note:

Load center is measured from the fork front. A standard load center point refers to the center of a cubic of side length of 2400mm. When gantry tilts forward, the bearing capacity will reduce in case of use of non-standard fork or loading a load exceeding the normal width. Load curve tells you bearing capacity of various load centers in time.